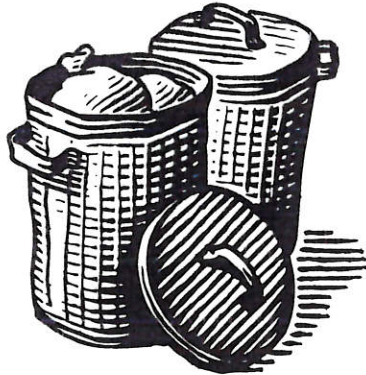


Roads and Grounds

We need your help to
keep our neighborhood beautiful.

Follow the community rules for Garbage and Recyclables.



Household trash must be placed at the curb in covered containers.

It helps to keep things neat if you first put the trash in a closed plastic bag so that when the container is emptied, items will not fall onto the street.

Please do not leave bags at the curb.

Recycle items that can be commingled are: Glass bottles, cans, plastic containers, etc. These items must be placed out at the curb in a covered container marked “recycle”.



Newsprint and other paper materials can also be commingled with the above mentioned articles.

Cardboard boxes should be broken down, folded, and placed at the curb. Miscellaneous pieces of cardboard can be commingled with Newsprint and other paper materials and placed in the “Paper” container.



Trash and recyclables must not be placed outside until 7:00 P.M. on the evening before pickup. Trash and recyclable containers must be stored in the garage. They must not be stored outside.

Any variances of the trash storage and handling procedures defined above, are in violation of Association Rules and Regulations and are subject to penalties.

Please follow our rules